

All plants need light, water, air, nutrients, and space to grow.

Plant structure

Plants can grow inside and outside.

Flower:

- attracts bees
- used in reproduction
- have male and female parts.

Stem:

- supports the plant and holds the leaves towards the light
- transports water and nutrients from the roots to the rest of the plant in vessels.

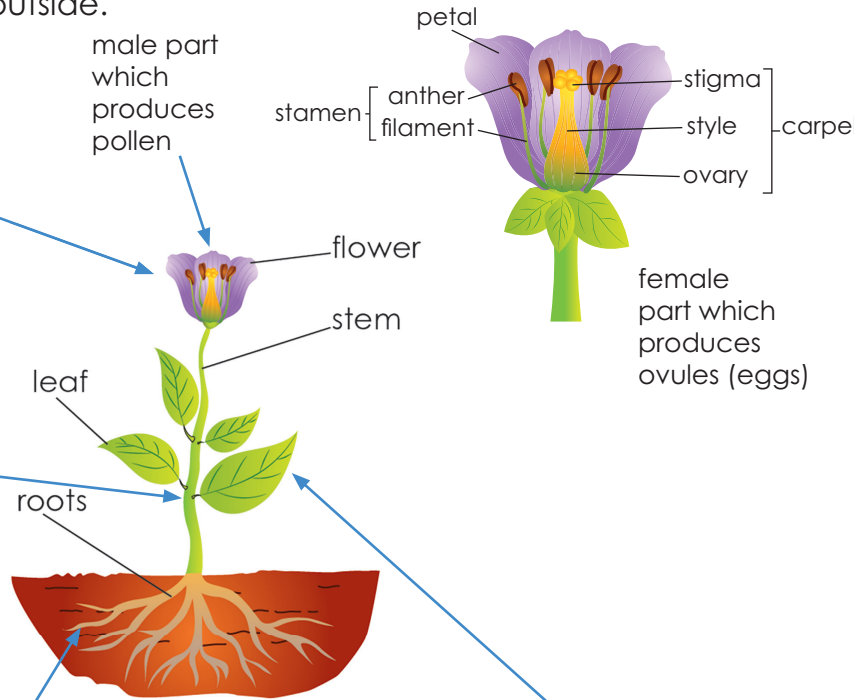
Roots:

- anchor the plant, stopping it from blowing away
- covered in tiny hairs which help absorb water and nutrients from the soil
- different plants have different roots depending on the soil in which they grow.

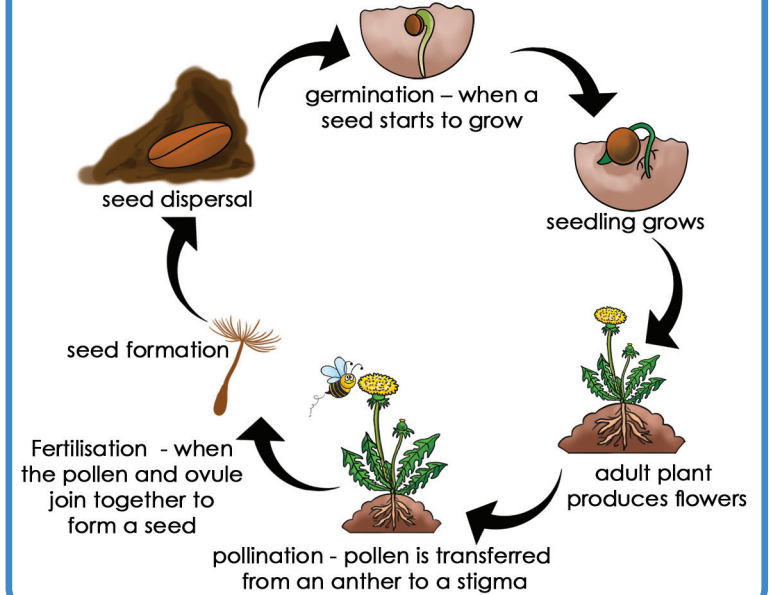
Leaves:

- make food for the plant using sunlight
- this process is called photosynthesis.

Living things that make their own food are called producers.



Lifecycle of a plant



Seed dispersal

Seeds are dispersed away (spread) from the parent plant so they have space to grow.

Seeds are dispersed by:

- wind
- water
- explosion
- carried by animals
- eaten by animals
- drop and roll (drop from a tree and roll away)

| Word | Definition |
|-----------------------|--|
| fertilisation | The joining together of an ovule and pollen. |
| flower | The reproductive part of a plant. |
| germination | When a seed starts to grow. |
| leaf (plural: leaves) | The parts attached to the stem of a plant and where food is produced. |
| life cycle | The stages a living thing goes through during its life. |
| nutrients | Substances that living things need so that they can stay healthy and grow. |
| ovule | An egg, or female gamete. |
| photosynthesis | The process by which a plant makes its own food. |
| pollen | The male gamete. |
| pollination | The moving of pollen from one plant to another for fertilisation. |
| producer | Living things that make their own food; plants are producers. |
| roots | The parts that anchor a plant into the ground, and that take up water and nutrients from the soil. |
| seed dispersal | The moving of seeds away from the parent plant. |
| stem | The main body of a plant, which supports the plant and holds the leaves up to the light. |
| water transport | Water transport: how a plant takes water from the ground through the roots and then up the stem to the leaves. |